

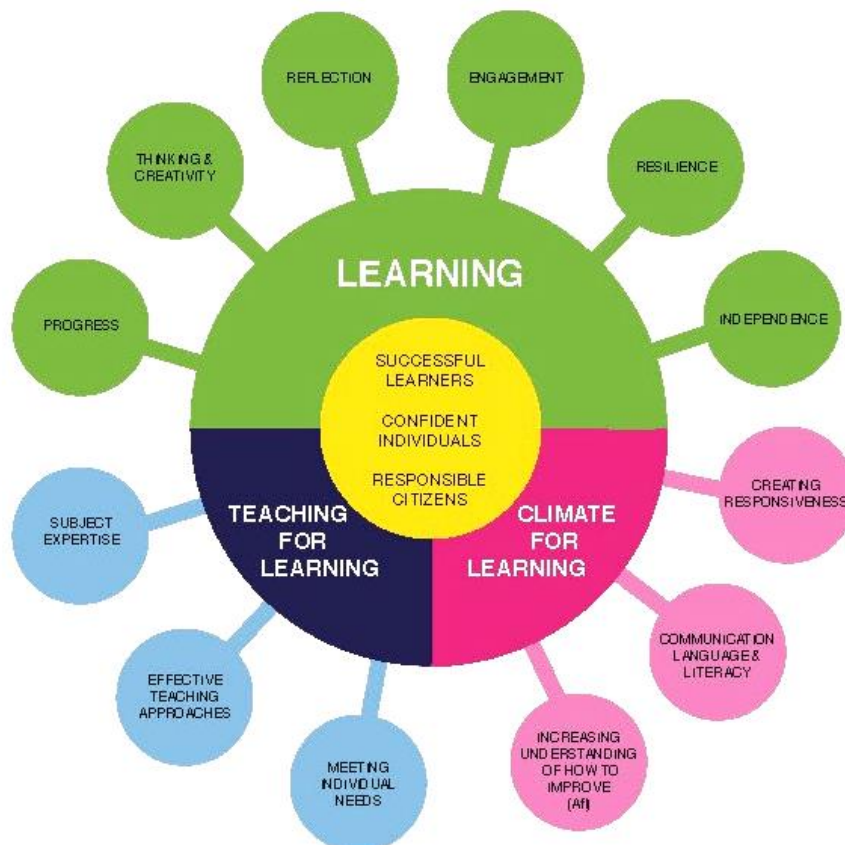
SW Multi Academy Trust Learning and Teaching Policy

Putting teaching and learning at the heart of what we do.

It is our hope that every pupil can look back positively on his/her school experience having achieved the highest standards of work and achievement. To this end we provide a broad and balanced education which gives emphasis to the aesthetic, creative, practical, social and moral aspects of life as well as academic skills, such as literacy, numeracy and IT.

The schools within the SWAT will strive continuously to improve the quality of

teaching and learning for all its pupils. Our aspiration is to enable all of our young people to develop their capacities as successful learners, confident individuals and responsible citizens who make an effective contribution to society. Our Learning and Teaching policy is fully in harmony with the values of the Samuel Ward Multi Academy Trust, and provides an important impetus to achieving our vision that all our young people should be valued and taught compassion, hope, respect, resilience, integrity and wisdom.





Policy Objectives

- To develop successful learners, confident individuals, responsible citizens who are effective contributors to society
- To provide engaging teaching and a climate conducive to learning, so as to encourage independent and collaborative learning and to promote high level thinking and creativity.
- To move teaching and learning to “Outstanding”, ensuring that all students reach or exceed National Expectations and make progress against their target grades (based on prior attainment and excellent value added) fulfilling their early promise and latent potential.

Learning should take place in an orderly and disciplined environment in which every pupil feels valued, while being responsive to the maturity of individuals and the development of personal responsibility. We recognize the supreme importance of the expertise and professionalism of every member of staff

and seek to provide opportunities for these to be effectively employed and consistently developed.

Through our partnership working we will ensure that resources are managed effectively to equip our children and young people with the skills and knowledge they require in order to become successful learners, confident individuals, responsible citizens who are effective contributors to society

Planning

Planning of lessons and Schemes of Work will provide structured opportunities for students to achieve and to develop an understanding of how to learn. Teaching and learning will be supported by a climate that empowers and motivates students, encouraging them to engage in further learning for the rest of their lives.

Lessons will contain opportunities for students to develop all the elements of Learning. Lessons will be enhanced by the three characteristics of excellent teaching. Learning will be tailored to individual needs, enabling students to learn at different paces and in different ways.

Learning

Teaching will enable students to learn better and to become better learners, developing their skills, attitudes and language to learn well whatever their starting points. All lessons will offer students opportunities and encouragement to demonstrate these key characteristics of learning.

PROGRESS

Work to criteria at their target grade / level and above
Acquire new knowledge and skills, develop deeper understanding
Complete challenging tasks

THINKING CREATIVITY

Generate questions
Explore and research
Use higher order thinking skills
Analyse and form their own ideas

ENGAGEMENT

Concentrate well
Resist distractions
Enjoy their learning
Show enthusiasm

REFLECTION

Reflect on experience
Show deep thinking,
Explore emotions
Develop a positive self image

RESILIENCE

Lock onto learning
Accept challenges
Overcome barriers
Stick at a task
Persist with difficult tasks

INDEPENDENCE

Show initiative
Take responsibility
Challenge themselves and others
Work as part of a team
Demonstrate leadership

A Climate for Learning

A learning environment will be provided which is safe, purposeful and inclusive, where students behave well grow to believe in themselves, care for others and respect their environment.

UNDERSTANDING HOW TO IMPROVE (AfL)

Pupils get frequent, focused feedback
To help them improve
Marking celebrates progress and
provides next steps
Objectives and goals for learning are
Shared and used to support learning
Peer and self -assessment
supports learning

COMMUNICATION, LANGUAGE & LITERACY

Talk in the classroom is focused on
learning to learn
Teachers build up students' language
and technical vocabulary
Discussion and dialogue in lessons
are focused on stimulating deep
insight into learning

INDEPENDENCE

Pupils will:
Show initiative
Take responsibility
Challenge themselves and others
Work as part of a team
Demonstrate leadership

Teaching

We aim to make our teaching outstanding with no teaching inadequate or requiring improvement

MEETING INDIVIDUAL NEEDS

Planning takes account of individual differences;
Tasks are tailored and sensitively matched to students' learning needs and styles.
Tasks challenge pupils to meet demanding targets
Interaction with students enables each one to receive personal coaching and mentoring
Support by other adults is targeted precisely

SUBJECT AND SPECIALIST EXPERTISE

Teachers keep up to date with innovation in their specialist area and apply their expertise to challenge and motivate students
Teachers develop literacy, numeracy and ICT across their specialist area
Attention to students' health and safety is paramount

EFFECTIVE TEACHING APPROACHES

Questioning, modelling and explaining are used skilfully to promote learning for all
Resources, including innovative use of technology, make a marked contribution to the quality of learning,
Approaches are varied and chosen ingeniously to make students think deeply