



# Blue Area Parents Meeting



- Which adults work in Blue Area?
- What Learning are we covering this term?
- When will my child have homework?
- When do they need P.E kits?

# Blue Area Staff

## **TEACHERS**

Miss Graves – B1G

Mrs Quarrell – B1Q

Mrs Debnam

## **TEACHING ASSISTANTS**

Mrs Broomfield

Mrs Dew

Mrs Hammond

# Morning Routines in Blue Area

- Kiss and goodbye in the playground.
- Children to walk into school independently.
- Reading book and log in hand to put in book change box/table top
- Pack lunch and book bag away.
- Ready to work by 9.00am.
- Messages for teachers please give to the adults on the door.



# End of the day routines in Blue Area

- Please stand on the black tarmac away from the classroom door.
- Teachers will bring your child out of the classroom.
- Wait for your child to come to you – we want to keep everyone safe!

# PRIMARY CURRICULUM



- All pupils take part in daily letters and sounds, literacy and numeracy lessons. For literacy we follow Talk for Writing and Maths is Maths Mastery.
- The children use books now not learning journeys. Although we still take lots of pictures of their learning.
- Westfield Primary Academy follows the 'International Primary Curriculum'. Our topics this term are:
- Ourselves and Celebrations.

# Westfield Houses!



**FARAH**



**ENNIS**

**PENDLETON**



**MURRAY**





# Reading matters!

- Books go home at night and back in the morning.
  - Books in a book bag, with a log.
- Hear your child read at home every night.
  - Write a comment in the log book.
- Certificates earned, medal tokens gained!



# Reading Challenge

- All children are expected to read every night at home.
- Teaching Assistants will count up the number of times your child has read during the week.
- Children will receive rewards for reading  
10 = a medal token, 20 = a medal token and a bookmark, 30 and above = a special certificate.



# Reading Challenge

- Please make sure each reading experience is signed by an adult.



# Homework

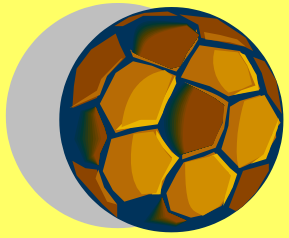


- This is a legal requirement! As set out by the Government.
- All children are expected to read every night at home.

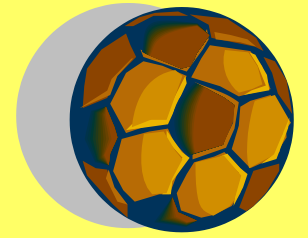
## BLUE 1

Spellings – Given on a Mon/Tues test on the following Monday.

Homework – Given every other week on a Friday to be returned by the following Fri, it will be a maths, literacy or topic based task



# P.E.



- P.E. Kit – House t-shirt, black shorts, plimsolls or trainers, not shoes!
- No jewellery, or earrings to be worn.
- Please make sure it is sent in, in a named P.E. bag.
- Please send your child to school with their P.E. kit on a Monday morning and it will be sent home on a Friday evening. PE is generally on a Thursday/Friday.
- NAME on ALL kit and uniform.



# Praise systems

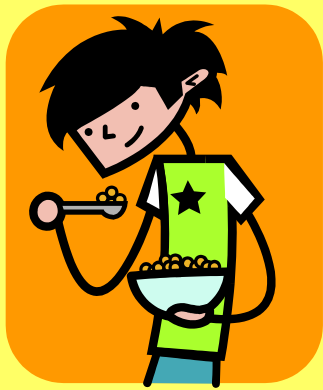


- Certificates are given out in praise assemblies.
- Medal token can be earned!
- WOW windows – will show children's daily achievements!

# S.A.T.s

## (Standard Assessment Tests)

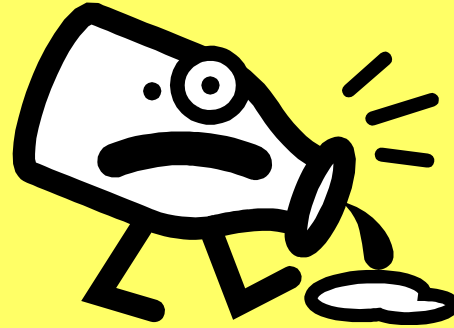
- Blue 1 will be taking a Phonics Screening Check during June.
- Blue 2 will be taking their end of year SATS tests during May/June.
- Watch out for a meeting later on in the year!



# Ready for work!



- Make sure your child has plenty of sleep on a school night.
- Make sure they have breakfast before coming to school eg. Cereal, Toast, Juice etc.
- Have they got everything they need – reading bag, spelling books, homework, P.E. Kit , lunchboxes etc.



# Problems or questions?

Blue area teachers are available after  
school or by appointment!